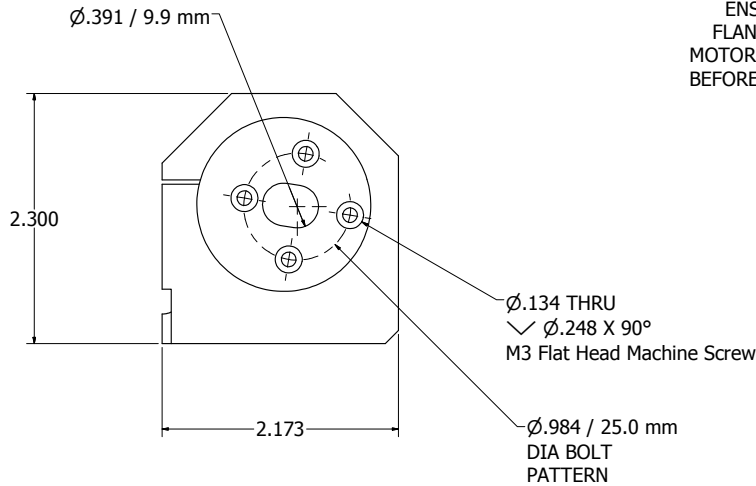
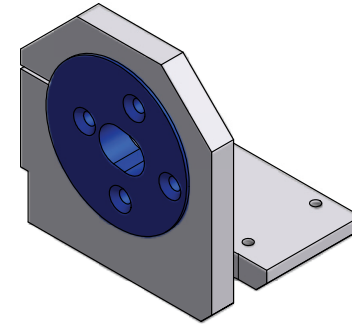


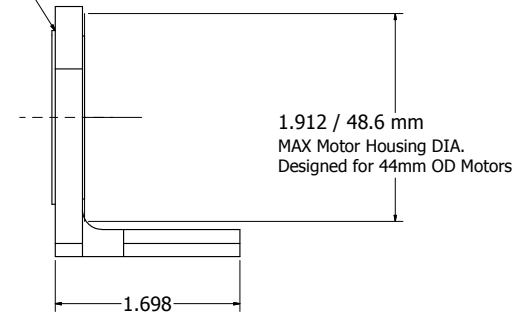
- NOTES:
 1. MATERIAL:
 2. REMOVE ALL BURRS AND SHARP EDGES UNLESS SPECIFIED.
 3. MAXIMUM ROUGHNESS $\sqrt{32}$ UNLESS SPECIFIED
 4. END OF NOTES

5-40 UNC - 2B
 USE YOUR STOCK MOTOR
 MOUNT SCREWS (4EA)

5-40 UNC - 2B $\sqrt{.300}$
 5-40 SCREW SUPPLIED.
 DO NOT OVERTIGHTEN SCREW.
 IT DOES NOT TAKE MUCH TO LOCK
 THE MOTOR IN PLACE.
 NO LOCKTITE REQUIRED



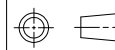
ENSURE THAT THE SWIVEL
 FLANGE IS FLUSH WITH THE
 MOTOR MOUNT UPRIGHT FACE
 BEFORE TIGHTENING THE 5-40
 LOCKING SCREW.



PRELIMINARY
 FOR QUOTATION ONLY
 DO NOT MANUFACTURE

This drawing and the information it contains are both property of TD-RACING INC. and are to be held by the recipient as confidential and are not to be transferred to any third party, used to make or furnish information for making any physical structure or any pictorial, graphic or verbal representation of any information contained herein or copied (unless supplied in productive form) without the express written consent of TD-RACING.

THIRD ANGLE PROJECTION



UNLESS OTHERWISE SPECIFIED, DIMENSIONS ARE IN INCHES. DO NOT SCALE DRAWING

GENERAL TOLERANCES 1 PL DEC: ± 0.020 2 PL DEC: ± 0.010 3 PL DEC: ± 0.005 ANGLES: $\pm 1^\circ$	PART MODEL FILENAME TD-2350.lam MODELED S KENNEY 2/7/2008 DETAILED The Dude 11/23/2008 CHECKED	TD-RACING INC.	
DESIGN STATE WorkInProgress	SIZE D	DESC MOTOR MOUNT ASSY, LST, BRUSHLESS	REV
	DWG NUMBER TD-2350		
		SHT 1 OF 2	

